



**ECO HIGH FORMWORK SDN BHD**

# E FORM REUSABLE SYSTEM

**Local Formwork Manufacturer /  
Specialist With One Stop Service:  
Technical Support and Labor Assembly Service**



**BUATAN MALAYSIA  
MADE IN MALAYSIA**



**PRODUK IBS  
BERTAULIAH**





ECO HIGH FORMWORK SDN BHD

E

F

O

R

M

## ECO HIGH FORMWORK SDN BHD

A manufacturer of Galvanized Iron and Aluminium Reusable Formwork System in Malaysia since 2017.

Our company aims to increase the exposure and usage of galvanised iron formwork (**E Form**) in the construction industry. We intend to market E Form as a viable and superior alternative formwork option to our clients.



We are local reusable formwork manufacturer in Malaysia located in Penang.



# WHY US?



ECO HIGH FORMWORK SDN BHD

	<b><i>E FORM</i></b>	<b>ALUMINIUM FORMWORK</b>	<b>TIMBER FORMWORK</b>
<b>Weight</b>	20-25kg/m <sup>2</sup>		11kg/m <sup>2</sup>
<b>Cycle Times</b>	100% Reusable		Max 3-4 times
<b>Fabrication</b>	At factory		On sites
<b>Dismantle Period</b>	Shorter dismantle period ( $\pm 60\%$ ) due to prop remains below (Subject to engineer's approval)		To be dismantle all panel with support concurrently as is support by scaffolding system (Subject to engineer's approval)
<b>Small Machinery (Table saw, etc)</b>	N/A		Needed
<b>Method to Install</b>	Use Pin & Wedges (reusable)		Use iron nails (Non-reusable and increase wastage)
<b>Surface Quality of Concrete</b>	Smooth, high accuracy of horizontal and vertical structure member (Skim coat 3-5mm only)		Rough Surface, large deviation of expansion mode and horizontal perpendicularly (Plastering & Skim coat 25mm needed)
<b>Environmental Impact</b>	Eco friendly due to less rubbish from reusable formwork system		Very poor as timber rubbish are extensive
<b>Wastage of Material</b>	Low wastage		High wastage
<b>Costing</b>	Labour Cost: Cheaper than timber formwork Material Cost: Cheaper than Aluminium	Material Cost: Higher cost than Galvanized Iron	Conditional e.g: If repeat quantum is high, material cost will be increase due to low cycle time

<b>Summary</b>	High efficiency	Low efficiency as need fabrication on site
	High accuracy	Low accuracy
	Time saving as supporting period is shorter a. Fabrication at factory b. Prop system (easy & fast dismantle)	More time consuming due to: a. Fabrication on site b. Scaffolding System
	Low wastage	High wastage
	100% Reusable	Low cycle times (Maximum 3-4 times only)
	Apply skim coats layer 3-5mm thick only	Apply plastering & skim coats layer 25mm thick
	Cost saving most compare to others	High material cost if high cycle time will need refabricate after 3-4 times
	Lighter than other materials (Faster Installation as it easy handling)	



CIS:24 CERT



CIDB PPS Cert (E Prop)



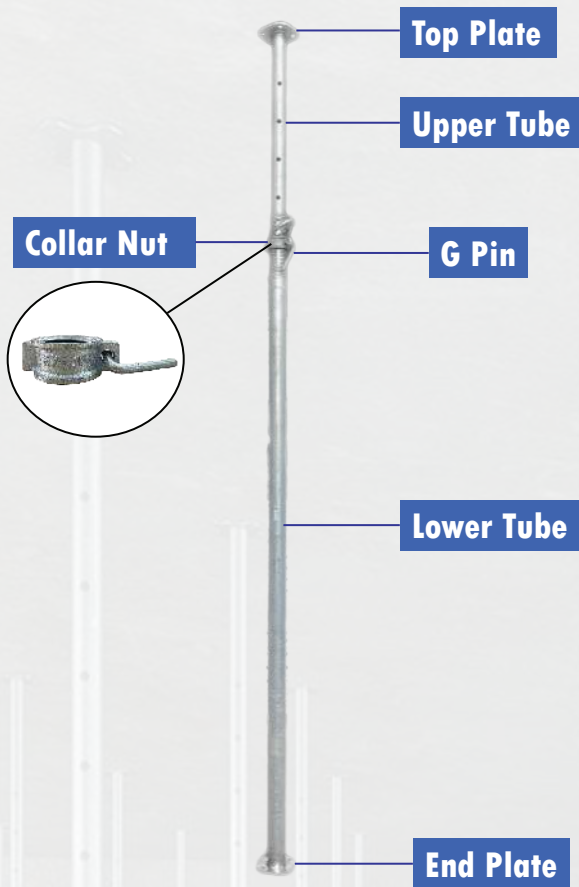
Made In Malaysia Cert



# E PROP (ADJUSTABLE PROP)



ECO HIGH FORMWORK SDN BHD



## Product Introduction:

1. A complete set of steel prop consists of top plate, end plate, upper tube, lower tube, collar nut and G pin.
2. E prop is easy to assemble and disassemble due to its simple structure.
3. Can be adjusted to any length within its range; it can be reused.
4. Widely used in propping system in construction.

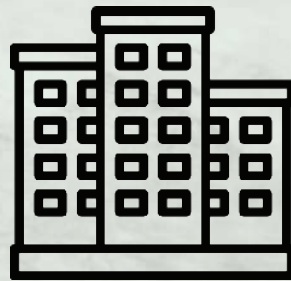


## Technical Data

Description	Height (mm)		Max Load(KN)	
	Fully Closed	Fully Extended	Fully Closed	Fully Extended
E Prop	2200	4000	70.0	13.8



# APPLICABLE FOR MOST TYPES OF BUILDINGS



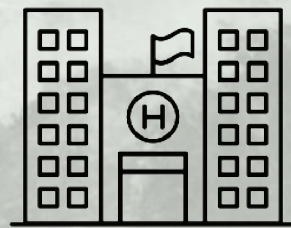
Apartment



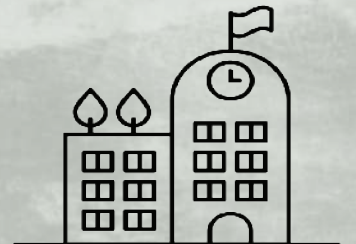
Landed Residential

## E FORM SYSTEM

Suitable for various design



Hospital



School



FREE CONSULTATION FOR FORMWORK, CONTACT US NOW 





ECO HIGH FORMWORK SDN BHD



Commercial



Factory



**FREE CONSULTATION FOR FORMWORK, CONTACT US NOW** 





## **ECO HIGH FORMWORK SDN BHD** (1240830-W)

3981, Jalan Perindustrian Nibong Tebal 3,  
Taman Perindustrian Nibong Tebal,  
14300 Nibong Tebal, Pulau Pinang  
Tel: 04-5937310  
H/P: 012-4732643 (Ms.Ooi)  
E-mail: enquiry.ehf@gmail.com  
Website: <https://ecohighformwork.com/>  
Facebook Page: Eco High Formwork Sdn Bhd

# Your Best Reusable Formwork Partner



**BUATAN MALAYSIA  
MADE IN MALAYSIA**



**PRODUK IBS  
BERTAULIAH**



**REGISTERED  
CIDB  
MALAYSIA  
CONTRACTOR**



**PENGELUAR IBS  
CIDB  
MALAYSIA  
BERDAFTAR**